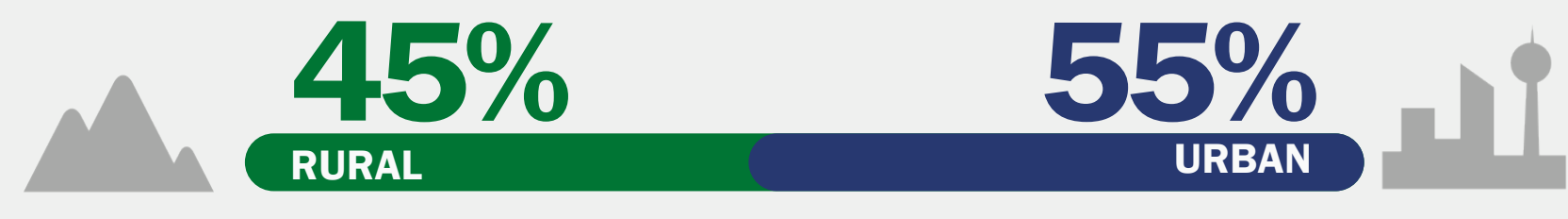


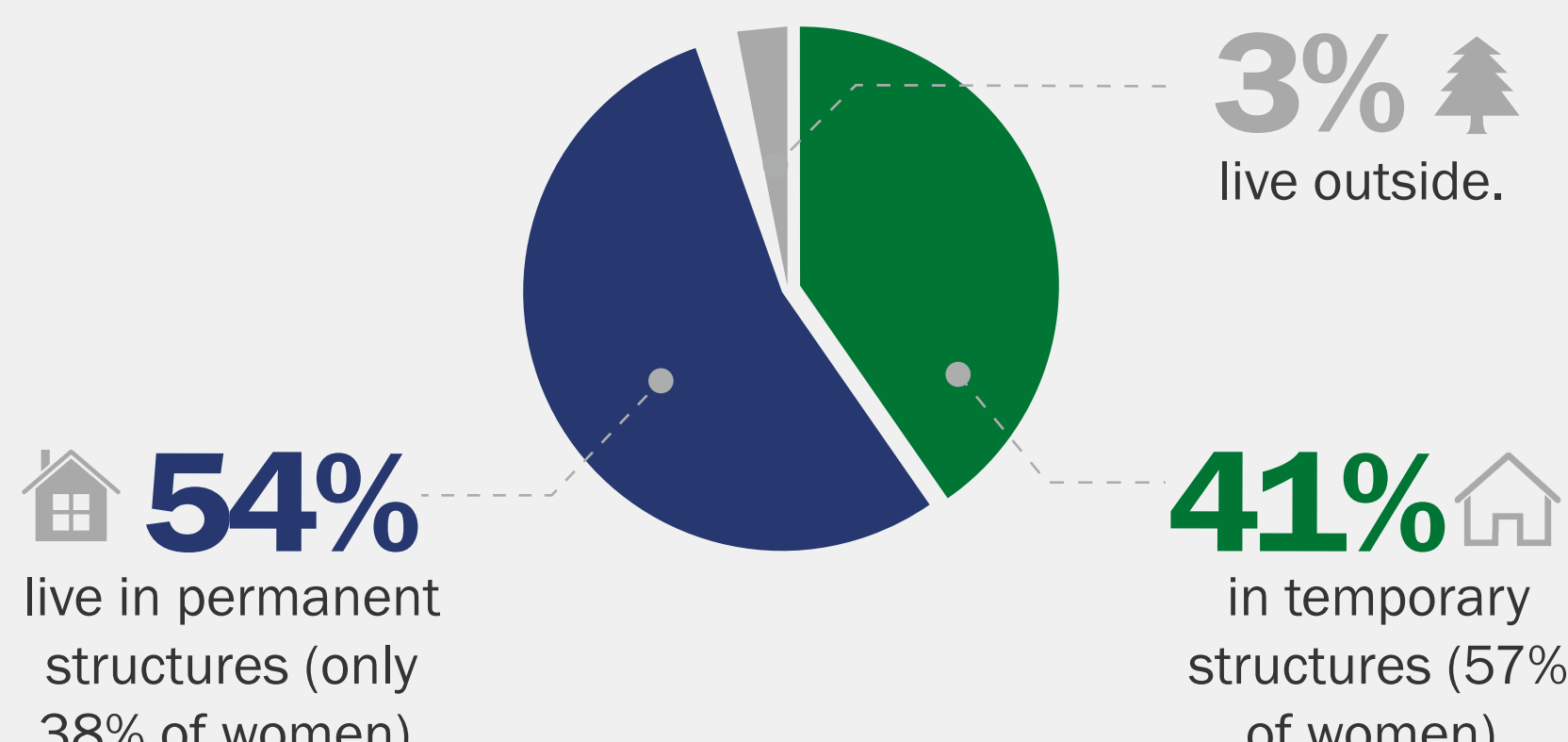
Survey Of The Poor

The Survey of the Poor in India has demonstrated that it is possible to randomly sample the poor and ultra-poor population and conduct quantitative research with them using a standard questionnaire. The profile of our Indian sample of 1,021 people living in poverty includes:

▶ SAMPLE

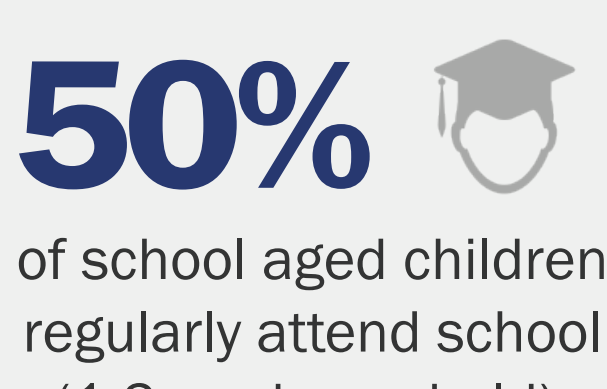
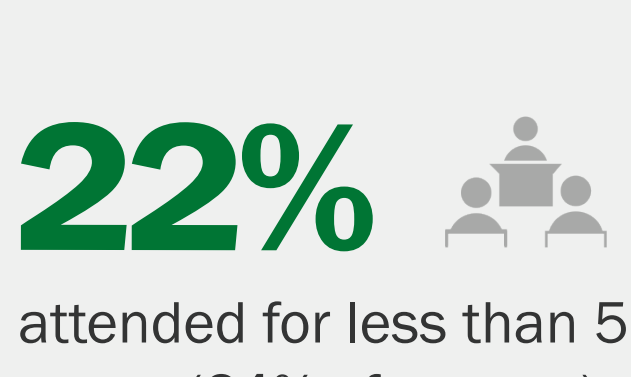
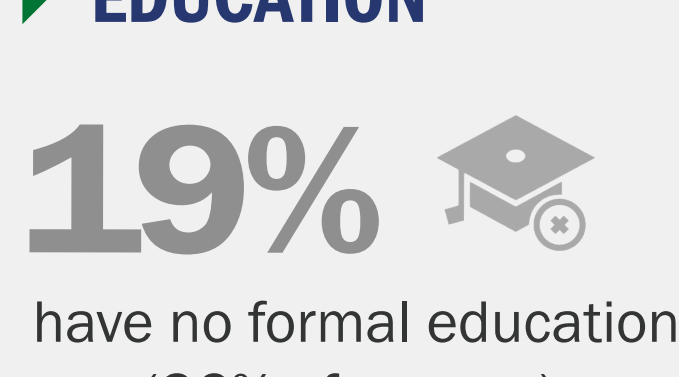


▶ HOUSEHOLD

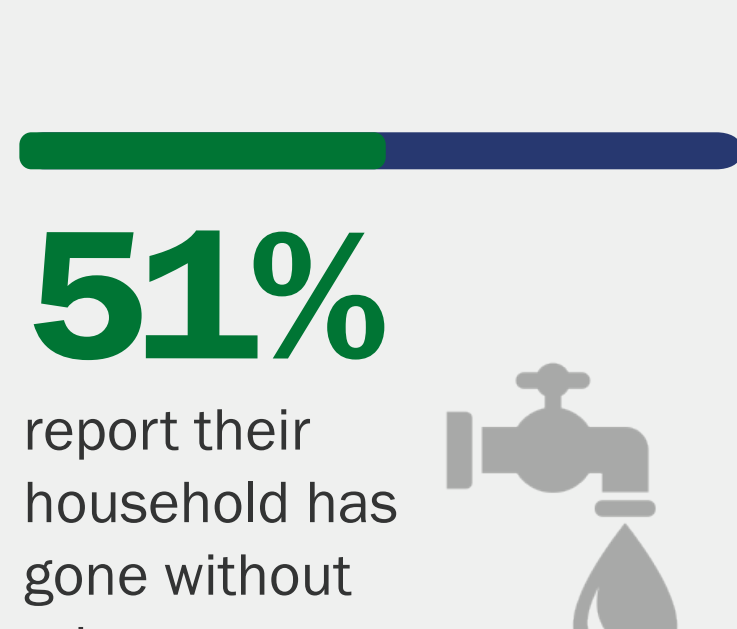
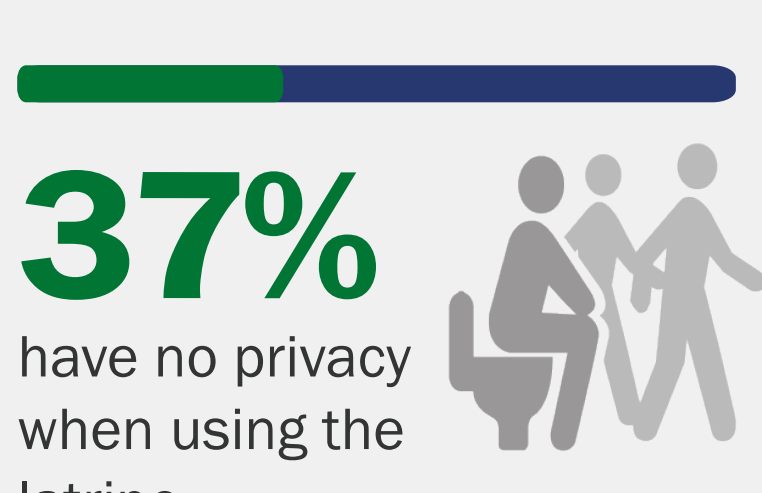
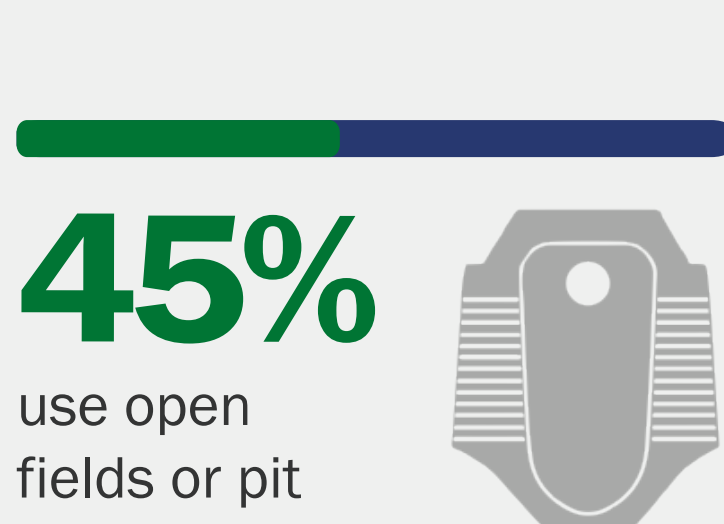
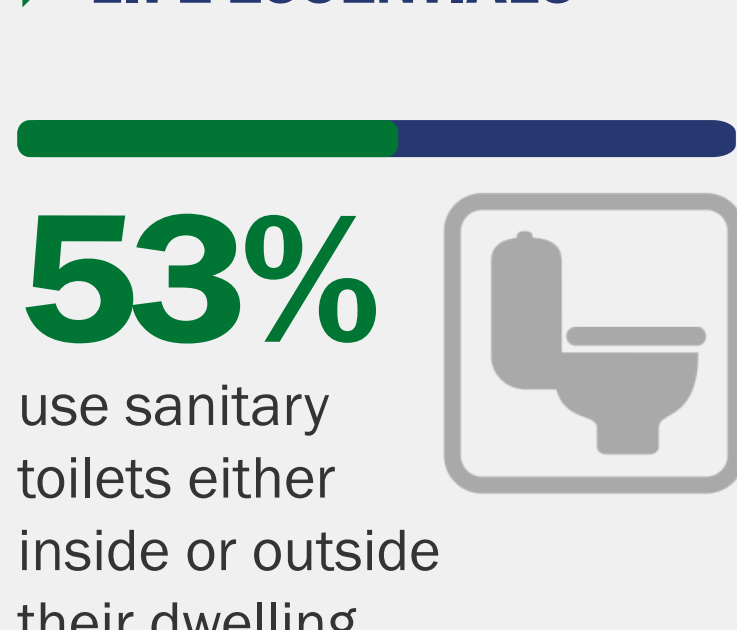


6 is the average household size living in an average of 1.5 rooms.

▶ EDUCATION



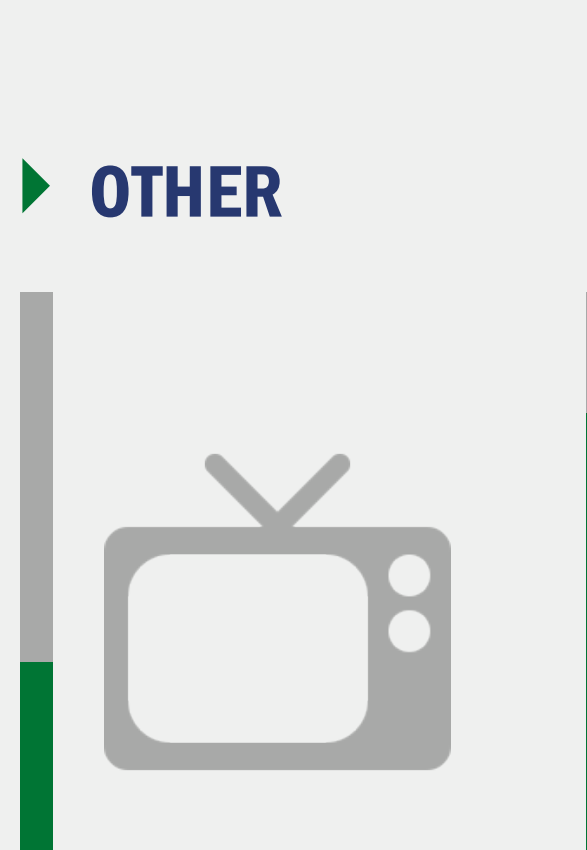
▶ LIFE ESSENTIALS



▶ FINANCIAL



▶ OTHER



For more information, please contact Eric Whan, Executive Director at: eric.whan@globescan.com

globescanfoundation.org

Survey of the Poor

THE GLOBESCAN FOUNDATION
Letting Everyone Speak